

Cutting Edge Quarterly

Summer 2006

A Publication of Ancient Arts Studio

Vol. 116 Issue I

"Touched by splendor - embraced by beauty."

CHURCH STAINED GLASS RESTORATION

St. John Vianney Chapel is a beautiful little church on a beautiful little island. The five large windows on the ocean side of the chapel were noticed to be sagging, primarily due to insufficient reinforcement.

After removal to the shop, problems of lead distortion, sizing, and putty are being corrected and horizontal flat bars are being added on the inside.

The wooden frames are being refurbished and re-finished while the glass is worked on.



Stained Glass Restoration
St. John Vianney Chapel
Balboa Island,
Newport Beach, CA
app. 6' x 4'

When Fr. Miguel Morales was having the exterior of the church painted, the painters discovered that the wooden frame of the choir window was quite rotted and needed to be replaced.

Ancient Arts was contracted by the Archdiocese construction department to provide a new anodized aluminum frame to accommodate the stained glass on the inside and protective glazing (Lexan X-L) on the outside.

Numerous broken pieces of the stained glass were edge glued or replaced as necessary and the old deteriorated lead was discarded.

Father Miguel started with a paint job, but in the end, he also got a thoroughly refurbished stained glass window.



Restored Choir Loft Window in New Frame
Santa Teresita Catholic Church
Los Angeles, CA, 2005
app. 6' x 5'

NEW CHURCH STAINED GLASS

Visit Our Website

Please visit us at
www.AncientArtsStainedGlass.com

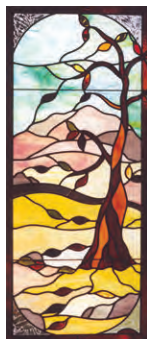
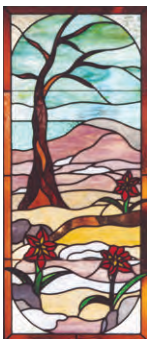
Among other features, you can see examples of our work in the residential, commercial, church and cemetery areas; read letters of reference; and read past issues of the "Cutting Edge Quarterly."

Our Lady of Mt. Carmel is, of course, a favorite image of the Carmelite Order, O.C.D. and it was our honor to design, fabricate and install this window in the priest's chapel. The window was dedicated in memory of the former pastor of St. Therese, Alhambra, Reverend William Fenton, O.C.D.



"Our Lady of Mt. Carmel"
Chapel Window, Rectory
St. Therese Catholic Church, Alhambra, CA
app. 6' x 4'

RECENT RESIDENTIAL WORK



From the "Four Seasons" Winter and Fall,
Each approx. 2' x 4'
Long Beach, CA, 2004



Leaded and Beveled Glass
View from Living Room, San Pedro, CA, 2005



Opalescent Green Leaves with Glue Chip
Background
App. 7" x 30" each, San Pedro, CA, 2005



Craftsman Design Door Insert
to Complement Craftsman Architecture
Long Beach, CA, 2004



Multi-colored Flowers and
Leaves, Closet Window,
app. 11" x 18"
Redondo Beach, CA, 2003